

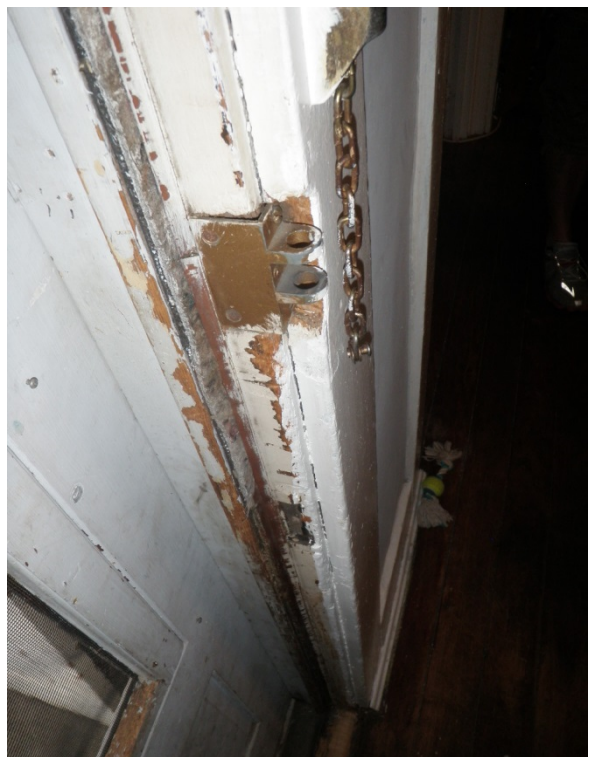
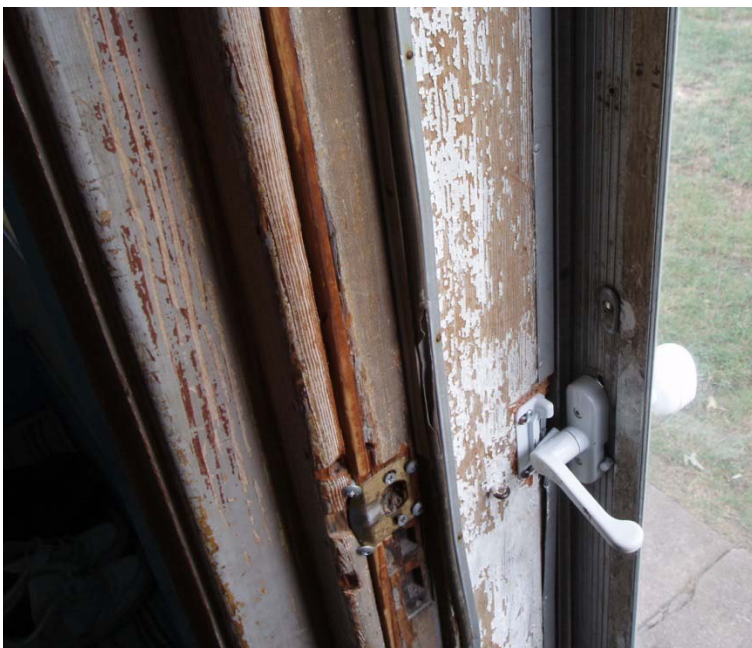
Common Sources of Lead Poisoning from Residential Property

1. Older wood window components, including wood basement windows:



2. Entry Door Components

- Doors, Casings (trim), Jambs & Thresholds



3. Basement Stairway Components



4. Porch and Exterior Components



5. Bathroom and Kitchen Components.

- Because lead-based paint was considered a durable paint, it was commonly used on doors, windows, baseboards, walls and even medicine cabinets, pantries and shelves where moisture was present, such as a bathroom, kitchen, basement and/or mudroom.

