

Perinatal Testing Protocol

Any woman who delivers a stillborn infant after 20 weeks gestation should be tested for Syphilis.

Six weeks after ANY STI is diagnosed, repeat STI screening panel including Syphilis

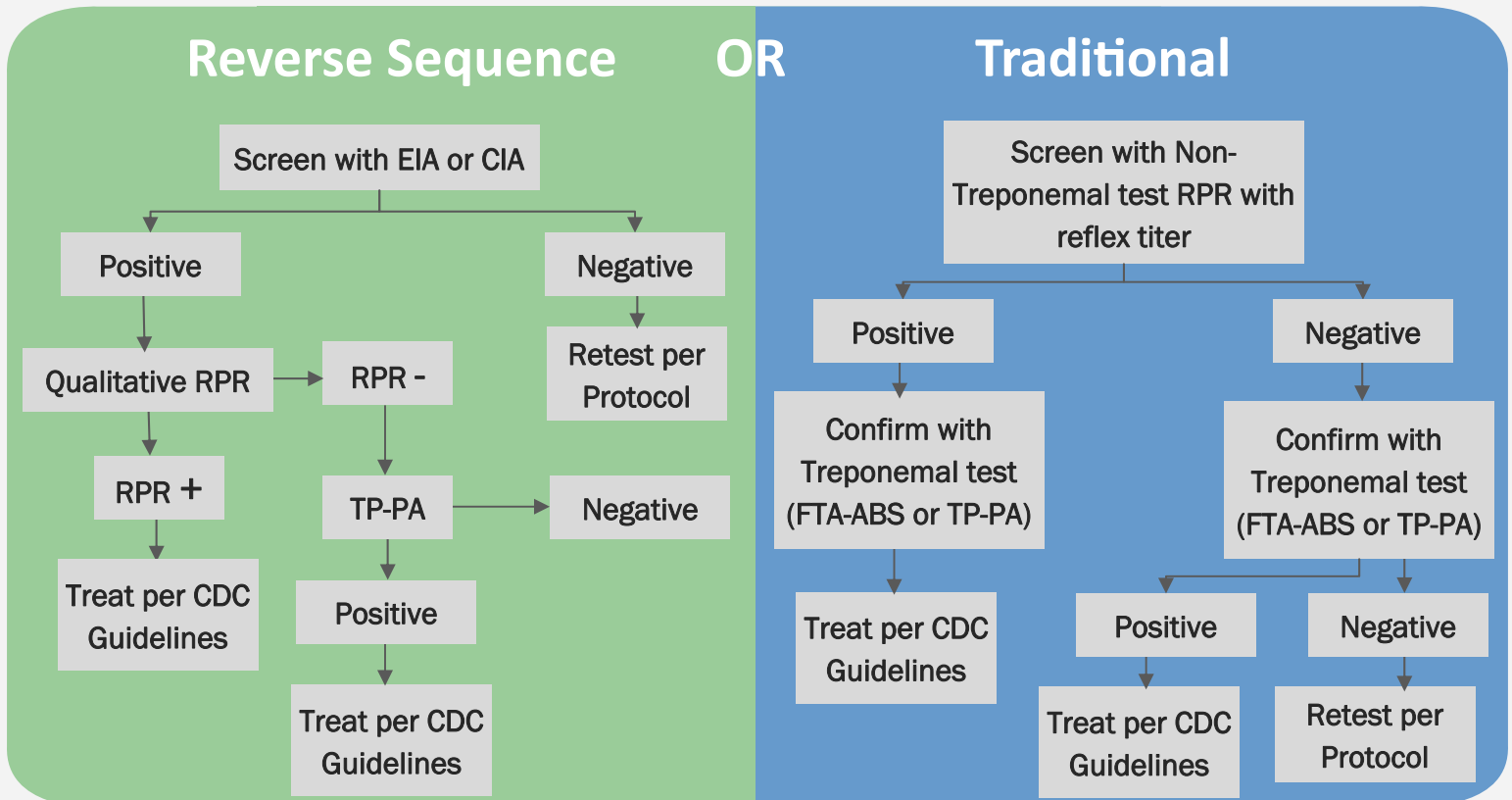
At First Prenatal Visit

During Third Trimester (28 Weeks)

At Delivery

No infant should leave the hospital without the maternal serologic status having been determined at least once during the pregnancy

Syphilis Screening Protocols



CDC recommendation on reverse sequence testing: www.cdc.gov/std/syphilis/Syphilis-Webinar.htm

Non-Treponemal Tests	Treponemal Tests	Interpretation
+	+	Syphilis, Yaws or pinta
+	-	False positive no Syphilis
-	+	Primary or latent Syphilis previously treated or untreated Syphilis
-	-	No Syphilis; Incubating Syphilis

Syphilis Treatment Guidelines

Syphilis Infection \leq one year duration	2.4 million units Benzathine Pencillin G IM in a single dose
Syphilis Infection $>$ one year or of unknown duration	2.4 million units Benzathine Pencillin G IM weekly x 3 weeks
Penicillin-allergic females must be desensitized & treated with penicillin	Treatment must be completed at least 30 days prior to delivery to prevent congenital syphilis.

To prevent the spread of syphilis or re-infection, partners need to be tested and subsequently treated. Hamilton County Public Health Department will contact patients to conduct this partner identification and follow-up

For previous titer information or treatment history of cases please contact Hamilton County Public Health:

Pat Allingham
Director of Nursing
P: 513.946.7809

OR

Ed Ventus
DIS Supervisor
P: 513.946.7637