

Maternal and Infant Health Monthly Surveillance Report
Hamilton County
March 2009

Angela Adam, RN, MSN, Epidemiologist
Ted Folger, MS, Senior Epidemiologist



250 William Howard Taft Road, 2nd Floor
Cincinnati, OH 45219 • 513.946.7800
hamiltoncountyhealth.org

Acknowledgments

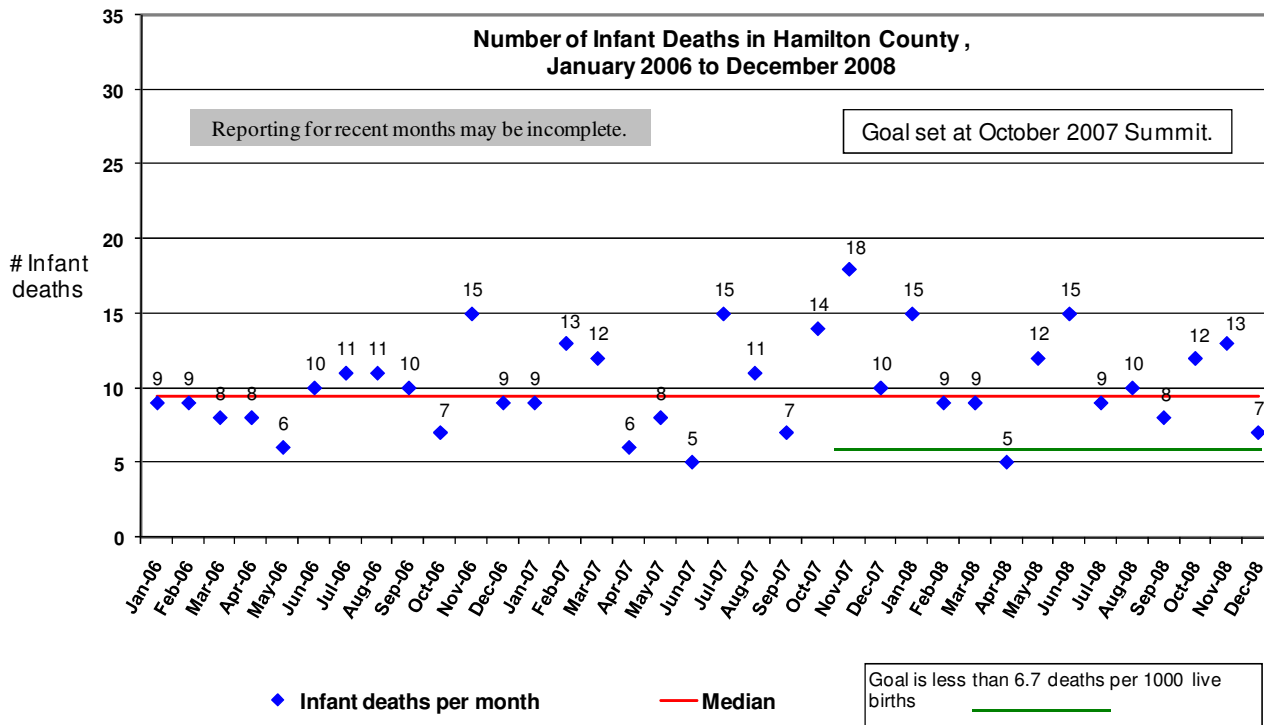
Thank you to John Paulson at the Ohio Department of Health for providing data for this report.

Thank you also to the Child Policy Research Center at Cincinnati Children’s Hospital Medical Center for sharing the Infant Mortality Run Chart.

Number of Infant Deaths

The Infant Mortality Run Chart (Figure 1) shows the number of infant deaths which occurred each month from 2006 to 2008. The number of infant deaths appears to have become more variable in 2007 and 2008. Because Hamilton County tends to have approximately 1,000 live births each month, the number of deaths each month can be directly compared to the goal of 6.7 deaths per 1,000 births. April was the only month in 2008 when the number of deaths was less than the goal set at the October 2007 Infant Mortality Summit.

Figure 1. Infant Mortality Run Chart, Hamilton County 2006-2008*

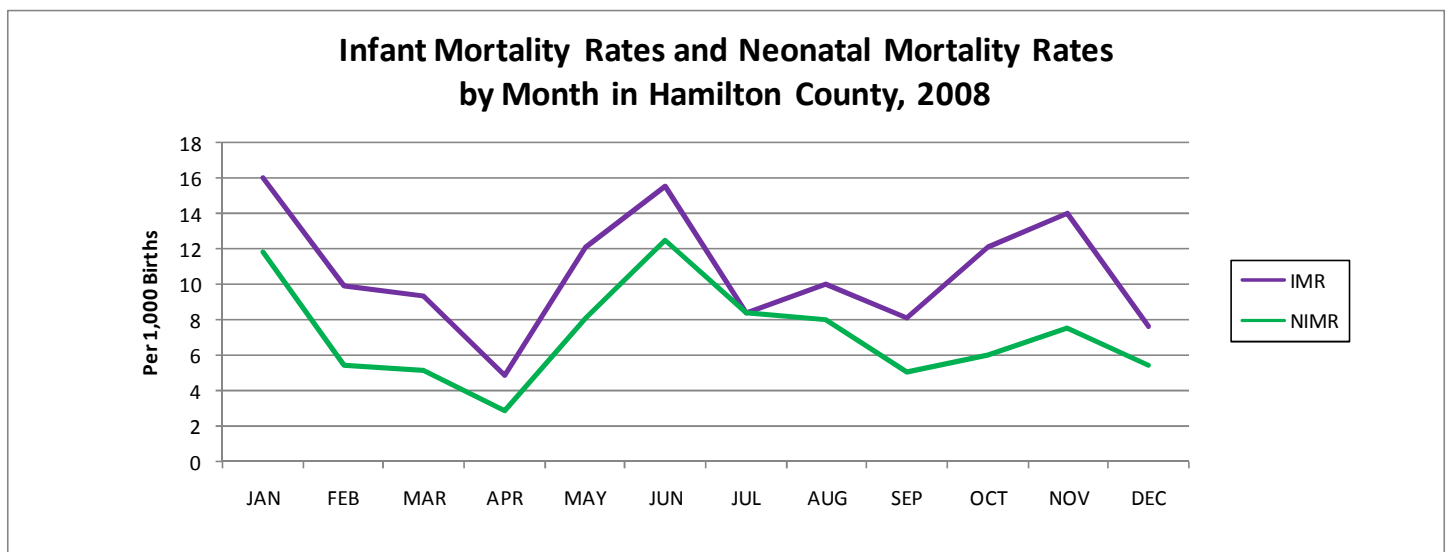


*2008 data are preliminary

Infant Mortality and Neonatal Mortality Rates

Figure 2 compares the Infant Mortality Rate (IMR), the number of infants <1 year who died per 1,000 births, with the Neonatal Infant Mortality Rate (NIMR), the number of infants <28 days who died per 1,000 births. Because most infant deaths occur in the neonatal period, these rates are similar. In July, neonatal mortality made up 100% of the infant mortality.

Figure 2



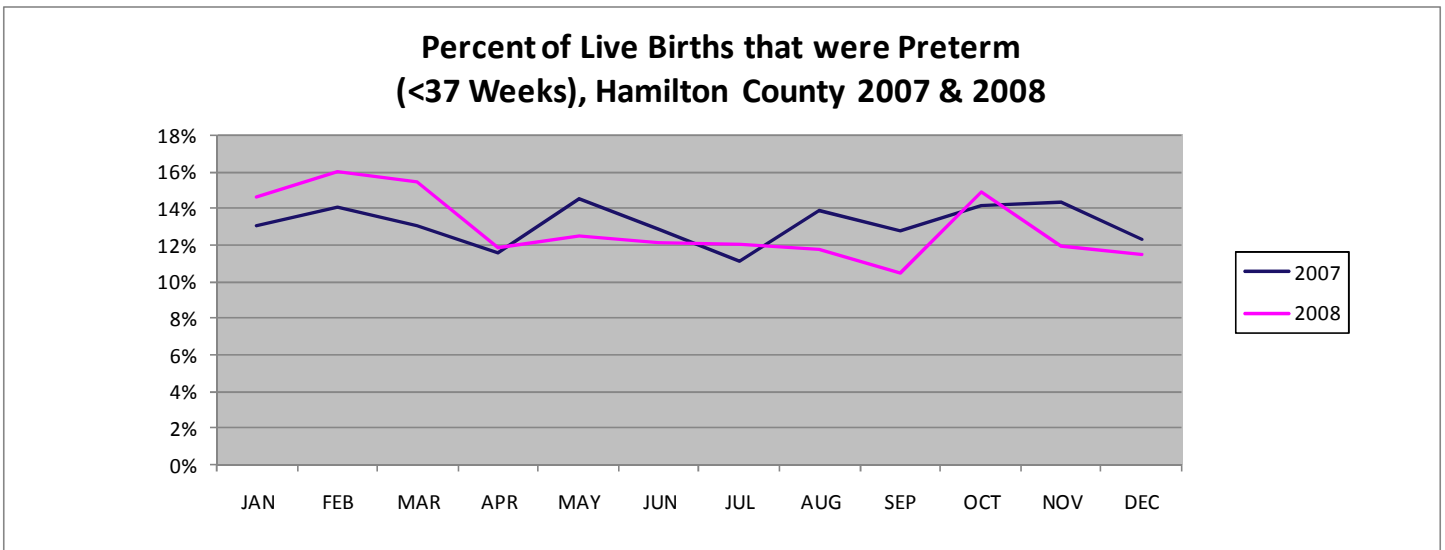
*2008 data are preliminary

Preterm Births

A reliable number of births have now been reported through December of 2008 in the Hamilton County Infant Mortality Surveillance System (HCIMSS), and the observed decline in the percentage of preterm births has remained significant ($r=0.64$, $p=0.043$) (Figure 3). Significance was determined by examining the strength of the overall trend in 2008. It will be interesting to note whether this trend persists in 2009.

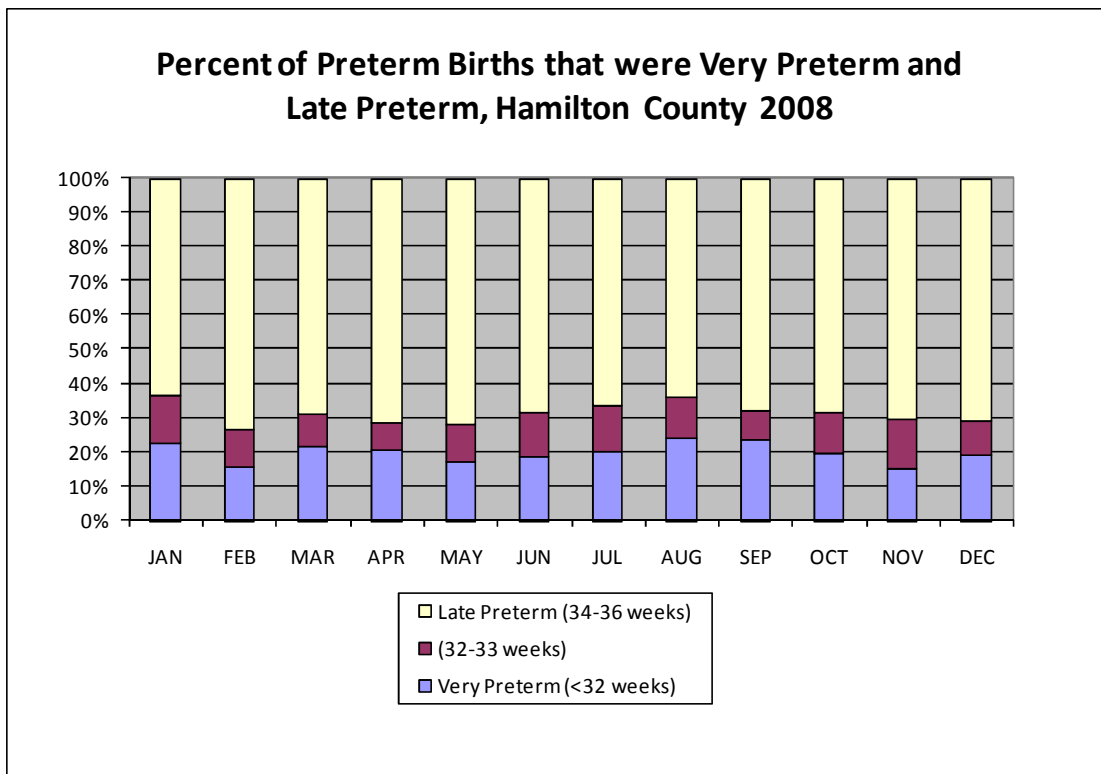
Very Preterm births (<32 weeks) continued to make up roughly 20% of preterm births in December 2008 (Figure 4). This report includes the additional category of Late Preterm births (34-36 weeks). Late Preterm births consistently comprised well over 60% of preterm births each month in 2008 for Hamilton County.

Figure 3



*2008 data are preliminary

Figure 4



*2008 data are preliminary

*Preliminary data were used in this report. Therefore, reporting may be incomplete, particularly in recent months. Data were not available for 2009.